

GOODRICH SOLUTIONS
WALLCOVERING
234 | **VOGUE**



Goodrich Global
SINCE 1983

FABRIC BACKED VINYL TYPE II

PREMIERWALL



*We've got you
Covered!*

PREMIERWALL

2019 - 2022.12

COMMERCIAL | HOSPITALITY | RESIDENTIAL



PANACHE



MEMPHIS LINEN



ANGLES SILK



SANSHIN

PREMIERWALL VOGUE LOW VOC

52" - 54" Fabric-Backed Contract Wallcovering

PHYSICAL PROPERTIES

Weight 20.0 oz. PLY / 619G/PLM

Roll Size 52"-54" x 30yds

Backing Osnaburg

Meets or exceeds Federal Specification CCC-W-408D for Type II Wallcovering

FIRE SAFETY

- Class "A" fire rated - tested in accordance with ASTM E-84 Tunnel test
- Flame spread: 25 / Smoke developed: 45
- Passes NFPA 286 Corner Burn Test

ENVIRONMENT AND HEALTH



- The product has been assessed according to the assessment criteria of the Singapore Green Building product certification scheme.
- Meets California section 01350 IAQ test requirements for wallcovering
- Can contribute to LEED EQ 4.1 point for low-emitting materials, adhesives, and sealants, if used with low VOC adhesives
- Can contribute to LEED MR 5.1 point for regional materials

ANTI-MICROBIAL FEATURES

PREMIERWALL VOGUE can be perforated, with 30 yard minimum requirement, for enhanced permeability. This product is intended for use in buildings that are properly designed and maintained to avoid moisture infiltration, condensation and/or accumulation at wall cavities and wall surfaces, particularly in warm, humid climates. Goodrich wallcoverings contain anti-microbial additives to resist the growth of mildew and bacteria and pass ASTM G-21. These additives will not prevent mold growth if residual wall moisture is in excess of 4% and/or is allowed to accumulate in or behind the walls.

BATCHING

Since slight variations in shading may occur from time to time, it is important that the roll carrying the same batch number be used in any one area.

ORIGIN

USA



Vogue
Specification

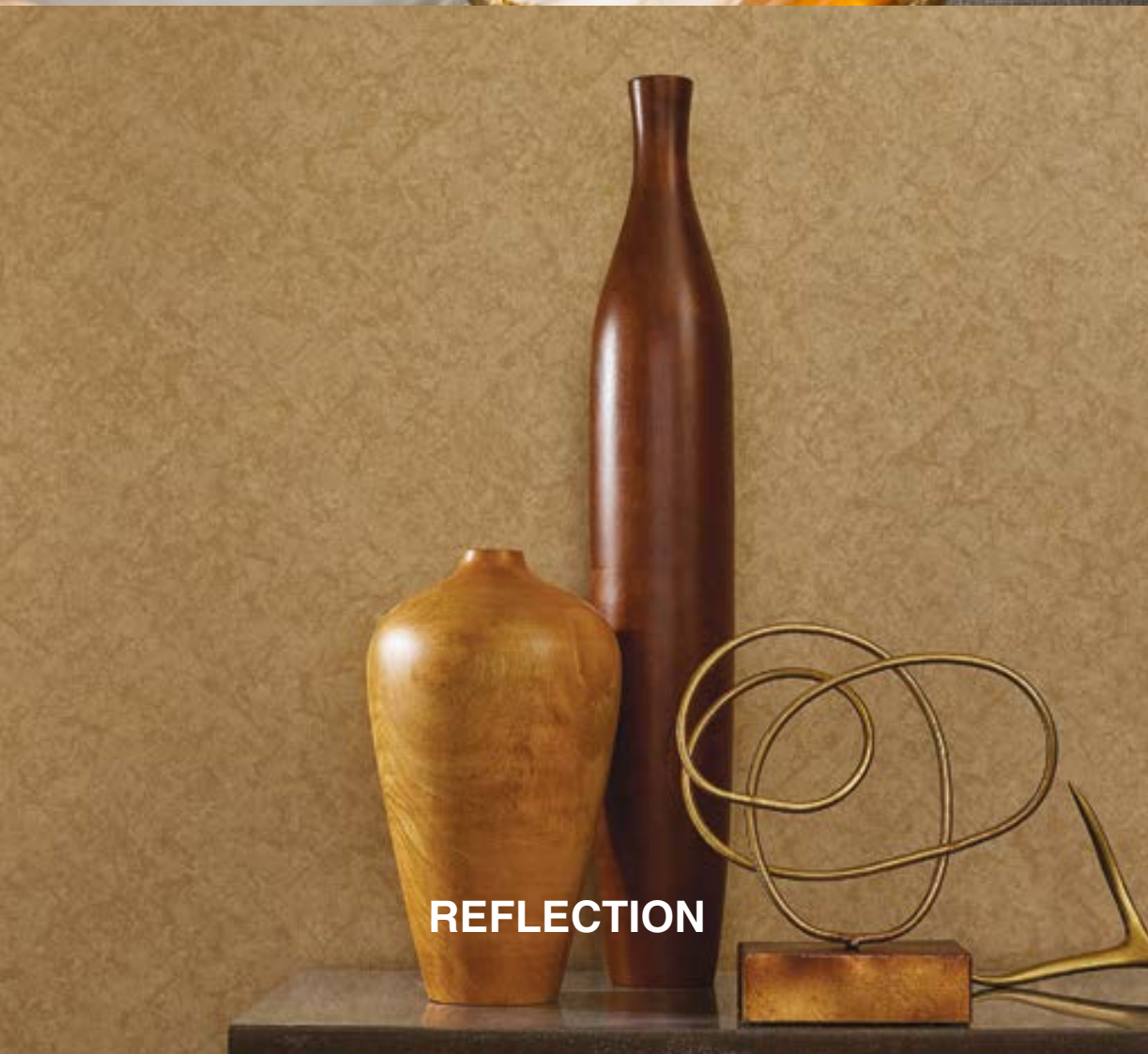
SISAL SONG



TWEED



LEVELS



REFLECTION



SAFARI



Vogue
Collection

PREMIERWALL (INDEX)

VOGUE

No	Pattern No	Pattern Name	Weight (Oz)	Pattern Repeat (In)		Pattern Match	Backing	Roll Size
				Horizontal	Vertical			
1	PV6401	PANACHE	20oz	0	0	Straight Random	Osnaburg	52-54" x 30yds
2	PV6402	PANACHE	20oz	0	0	Straight Random	Osnaburg	52-54" x 30yds
3	PV6403	PANACHE	20oz	0	0	Straight Random	Osnaburg	52-54" x 30yds
4	PV6404	PANACHE	20oz	0	0	Straight Random	Osnaburg	52-54" x 30yds
5	PV6405	PANACHE	20oz	0	0	Straight Random	Osnaburg	52-54" x 30yds
6	PV6406	WATERCOLOR CANVAS	20oz	0	0	Reverse Random	Osnaburg	52-54" x 30yds
7	PV6407	WATERCOLOR CANVAS	20oz	0	0	Reverse Random	Osnaburg	52-54" x 30yds
8	PV6408	WATERCOLOR CANVAS	20oz	0	0	Reverse Random	Osnaburg	52-54" x 30yds
9	PV6409	WATERCOLOR CANVAS	20oz	0	0	Reverse Random	Osnaburg	52-54" x 30yds
10	PV6410	WATERCOLOR CANVAS	20oz	0	0	Reverse Random	Osnaburg	52-54" x 30yds
11	PV6411	WATERCOLOR CANVAS	20oz	0	0	Reverse Random	Osnaburg	52-54" x 30yds
12	PV6412	MEMPHIS LINEN	20oz	0	0	Reverse Random	Osnaburg	52-54" x 30yds
13	PV6413	MEMPHIS LINEN	20oz	0	0	Reverse Random	Osnaburg	52-54" x 30yds
14	PV6414	MEMPHIS LINEN	20oz	0	0	Reverse Random	Osnaburg	52-54" x 30yds
15	PV6415	MEMPHIS LINEN	20oz	0	0	Reverse Random	Osnaburg	52-54" x 30yds
16	PV6416	MEMPHIS LINEN	20oz	0	0	Reverse Random	Osnaburg	52-54" x 30yds
17	PV6417	DEMI-TONE LINEN	20oz	0	0	Reverse Random	Osnaburg	52-54" x 30yds
18	PV6418	DEMI-TONE LINEN	20oz	0	0	Reverse Random	Osnaburg	52-54" x 30yds
19	PV6419	DEMI-TONE LINEN	20oz	0	0	Reverse Random	Osnaburg	52-54" x 30yds
20	PV6420	DEMI-TONE LINEN	20oz	0	0	Reverse Random	Osnaburg	52-54" x 30yds
21	PV6421	ANGLES SILK	20oz	0	0	Reverse Random	Osnaburg	52-54" x 30yds
22	PV6422	ANGLES SILK	20oz	0	0	Reverse Random	Osnaburg	52-54" x 30yds
23	PV6423	ANGLES SILK	20oz	0	0	Reverse Random	Osnaburg	52-54" x 30yds
24	PV6424	ANGLES SILK	20oz	0	0	Reverse Random	Osnaburg	52-54" x 30yds
25	PV6425	SISAL SONG	20oz	0	0	Reverse Random	Osnaburg	52-54" x 30yds
26	PV6426	SISAL SONG	20oz	0	0	Reverse Random	Osnaburg	52-54" x 30yds
27	PV6427	SISAL SONG	20oz	0	0	Reverse Random	Osnaburg	52-54" x 30yds
28	PV6428	SISAL SONG	20oz	0	0	Reverse Random	Osnaburg	52-54" x 30yds
29	PV6429	SANSHIN	20oz	0	0	Reverse Random	Osnaburg	52-54" x 30yds
30	PV6430	SANSHIN	20oz	0	0	Reverse Random	Osnaburg	52-54" x 30yds
31	PV6431	SANSHIN	20oz	0	0	Reverse Random	Osnaburg	52-54" x 30yds
32	PV6432	SANSHIN	20oz	0	0	Reverse Random	Osnaburg	52-54" x 30yds
33	PV6433	SANSHIN	20oz	0	0	Reverse Random	Osnaburg	52-54" x 30yds
34	PV6434	TWEED	20oz	0	0	Reverse Random	Osnaburg	52-54" x 30yds
35	PV6435	TWEED	20oz	0	0	Reverse Random	Osnaburg	52-54" x 30yds
36	PV6436	TWEED	20oz	0	0	Reverse Random	Osnaburg	52-54" x 30yds
37	PV6437	LEVELS	20oz	0	0	Reverse Random	Osnaburg	52-54" x 30yds
38	PV6438	LEVELS	20oz	0	0	Reverse Random	Osnaburg	52-54" x 30yds
39	PV6439	LEVELS	20oz	0	0	Reverse Random	Osnaburg	52-54" x 30yds
40	PV6440	LEVELS	20oz	0	0	Reverse Random	Osnaburg	52-54" x 30yds
41	PV6441	LEVELS	20oz	0	0	Reverse Random	Osnaburg	52-54" x 30yds
42	PV6442	REFLECTION	20oz	0	0	Reverse Random	Osnaburg	52-54" x 30yds
43	PV6443	REFLECTION	20oz	0	0	Reverse Random	Osnaburg	52-54" x 30yds
44	PV6444	REFLECTION	20oz	0	0	Reverse Random	Osnaburg	52-54" x 30yds
45	PV6445	REFLECTION	20oz	0	0	Reverse Random	Osnaburg	52-54" x 30yds
46	PV6446	REFLECTION	20oz	0	0	Reverse Random	Osnaburg	52-54" x 30yds
47	PV6447	REFLECTION	20oz	0	0	Reverse Random	Osnaburg	52-54" x 30yds
48	PV6448	SAFARI	20oz	18	27	Reverse Random	Osnaburg	52-54" x 30yds
49	PV6449	SAFARI	20oz	18	27	Reverse Random	Osnaburg	52-54" x 30yds
50	PV6450	SAFARI	20oz	18	27	Reverse Random	Osnaburg	52-54" x 30yds

PANACHE



PHYSICAL PROPERTIES

WEIGHT

Type II - 20 oz

BACKING

Osnaburg | Width: 54 in./137cm

MATCH

Straight Random

HORIZONTAL REPEAT

N/A

VERTICAL REPEAT

N/A



PV6401



PV6402



PV6403



PV6404



PV6405

PREMIERWALL VOGUE

PV6401

PANACHE

ROLL SIZE	: 52-54" x 30 yds
COMPOSITION	: VINYL
BACKING	: Osnaburg
WEIGHT	: 20 oz
PATTERN MATCH	: Straight Random

PREMIERWALL VOGUE

PV6402

PANACHE

ROLL SIZE	: 52-54" x 30 yds
COMPOSITION	: VINYL
BACKING	: Osnaburg
WEIGHT	: 20 oz
PATTERN MATCH	: Straight Random

PREMIERWALL VOGUE

PV6403

PANACHE

ROLL SIZE	: 52-54" x 30 yds
COMPOSITION	: VINYL
BACKING	: Osnaburg
WEIGHT	: 20 oz
PATTERN MATCH	: Straight Random



PREMIERWALL VOGUE

PV6404

PANACHE

ROLL SIZE	: 52-54" x 30 yds
COMPOSITION	: VINYL
BACKING	: Osnaburg
WEIGHT	: 20 oz
PATTERN MATCH	: Straight Random

PREMIERWALL VOGUE

PV6405

PANACHE

ROLL SIZE	: 52-54" x 30 yds
COMPOSITION	: VINYL
BACKING	: Osnaburg
WEIGHT	: 20 oz
PATTERN MATCH	: Straight Random

WATERCOLOR CANVAS



PHYSICAL PROPERTIES

WEIGHT

Type II - 20 oz

BACKING

Osnaburg | Width: 54 in./137cm

MATCH

Reverse Random

HORIZONTAL REPEAT

N/A

VERTICAL REPEAT

N/A



PV6406



PV6407



PV6408



PV6409



PV6410



PV6411

PREMIERWALL VOGUE

PV6406

WATERCOLOR CANVAS

ROLL SIZE	: 52-54" x 30 yds
COMPOSITION	: VINYL
BACKING	: Osnaburg
WEIGHT	: 20 oz
PATTERN MATCH	: Reverse Random



PREMIERWALL VOGUE

PV6407

WATERCOLOR CANVAS

ROLL SIZE	: 52-54" x 30 yds
COMPOSITION	: VINYL
BACKING	: Osnaburg
WEIGHT	: 20 oz
PATTERN MATCH	: Reverse Random

PREMIERWALL VOGUE

PV6408

WATERCOLOR CANVAS

ROLL SIZE	: 52-54" x 30 yds
COMPOSITION	: VINYL
BACKING	: Osnaburg
WEIGHT	: 20 oz
PATTERN MATCH	: Reverse Random



PREMIERWALL VOGUE

PV6409

WATERCOLOR CANVAS

ROLL SIZE	: 52-54" x 30 yds
COMPOSITION	: VINYL
BACKING	: Osnaburg
WEIGHT	: 20 oz
PATTERN MATCH	: Reverse Random



PREMIERWALL VOGUE

PV6410

WATERCOLOR CANVAS

ROLL SIZE	: 52-54" x 30 yds
COMPOSITION	: VINYL
BACKING	: Osnaburg
WEIGHT	: 20 oz
PATTERN MATCH	: Reverse Random



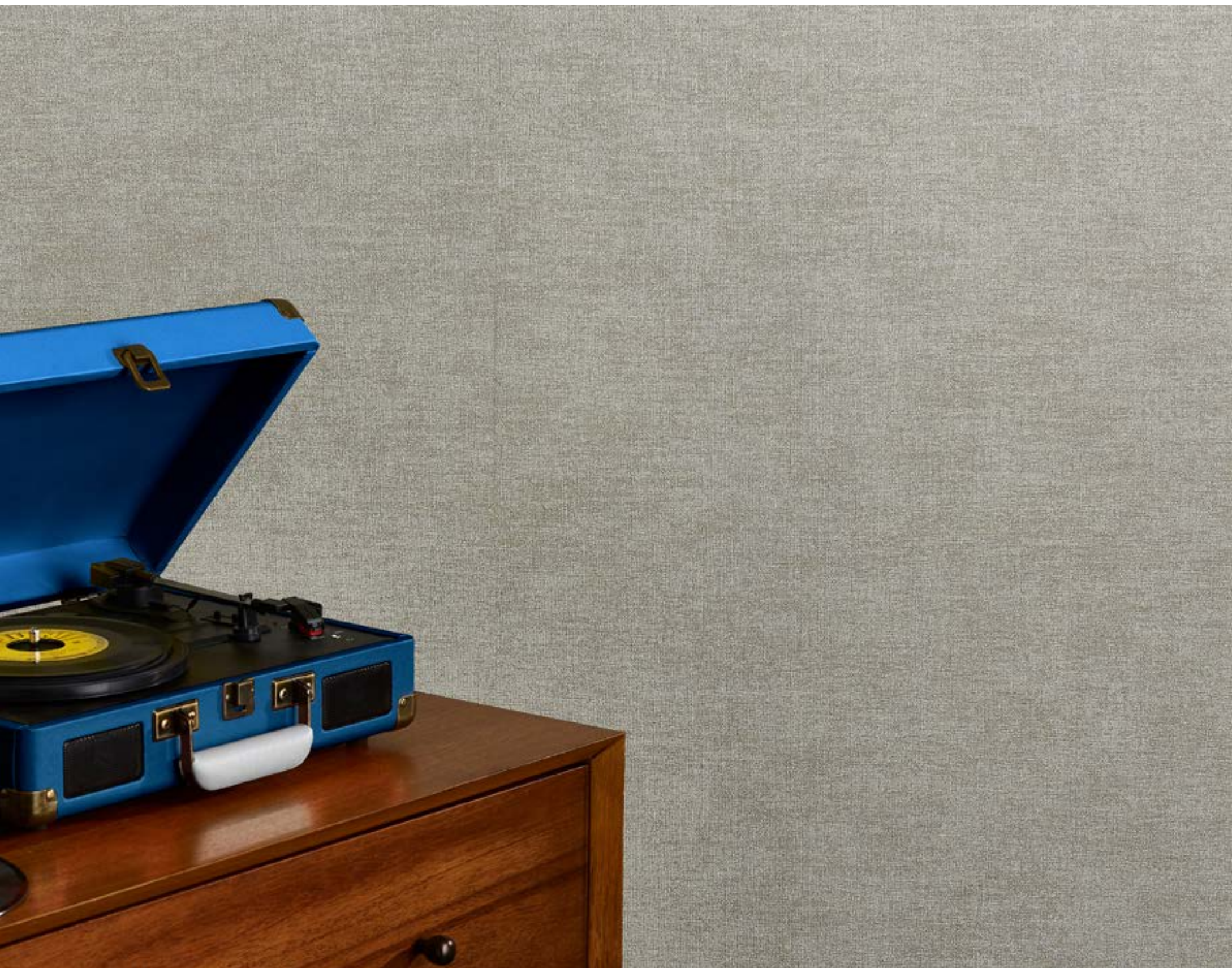
PREMIERWALL VOGUE

PV6411

WATERCOLOR CANVAS

ROLL SIZE	: 52-54" x 30 yds
COMPOSITION	: VINYL
BACKING	: Osnaburg
WEIGHT	: 20 oz
PATTERN MATCH	: Reverse Random

MEMPHIS LINEN



PHYSICAL PROPERTIES

WEIGHT

Type II - 20 oz

BACKING

Osnaburg | Width: 54 in./137cm

MATCH

Reverse Random

HORIZONTAL REPEAT

N/A

VERTICAL REPEAT

N/A



PV6412



PV6413



PV6414



PV6415



PV6416



PREMIERWALL VOGUE

PV6412
MEMPHIS LINEN

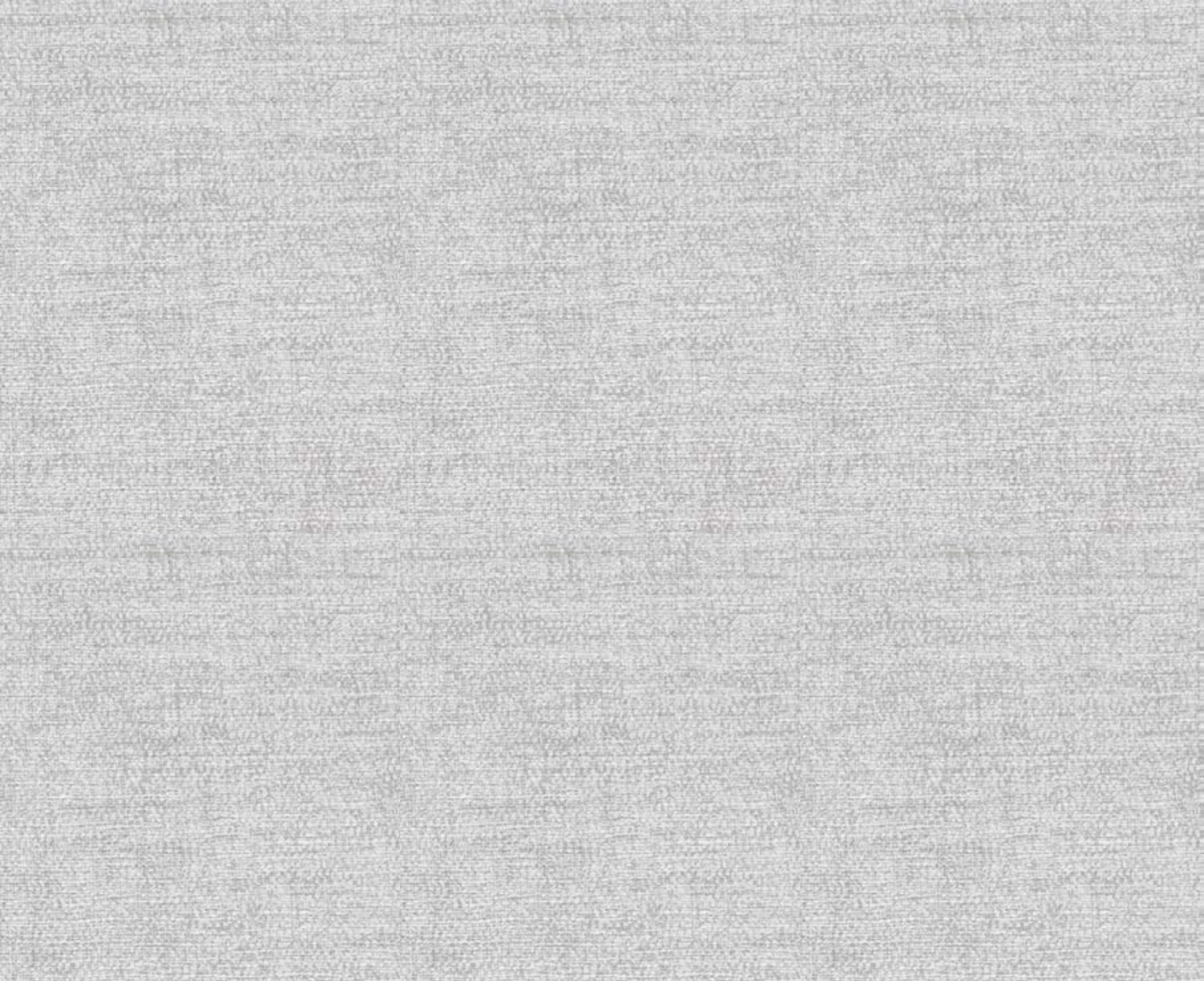
ROLL SIZE	: 52-54" x 30 yds
COMPOSITION	: VINYL
BACKING	: Osnaburg
WEIGHT	: 20 oz
PATTERN MATCH	: Reverse Random



PREMIERWALL VOGUE

PV6413
MEMPHIS LINEN

ROLL SIZE	: 52-54" x 30 yds
COMPOSITION	: VINYL
BACKING	: Osnaburg
WEIGHT	: 20 oz
PATTERN MATCH	: Reverse Random



PREMIERWALL VOGUE

PV6414
MEMPHIS LINEN

ROLL SIZE	: 52-54" x 30 yds
COMPOSITION	: VINYL
BACKING	: Osnaburg
WEIGHT	: 20 oz
PATTERN MATCH	: Reverse Random



PREMIERWALL VOGUE

PV6415

MEMPHIS LINEN

ROLL SIZE	: 52-54" x 30 yds
COMPOSITION	: VINYL
BACKING	: Osnaburg
WEIGHT	: 20 oz
PATTERN MATCH	: Reverse Random



PREMIERWALL VOGUE

PV6416
MEMPHIS LINEN

ROLL SIZE	: 52-54" x 30 yds
COMPOSITION	: VINYL
BACKING	: Osnaburg
WEIGHT	: 20 oz
PATTERN MATCH	: Reverse Random

DEMI-TONE LINEN

WAITING
ROOM



PHYSICAL PROPERTIES

WEIGHT

Type II - 20 oz

BACKING

Osnaburg | Width: 54 in./137cm

MATCH

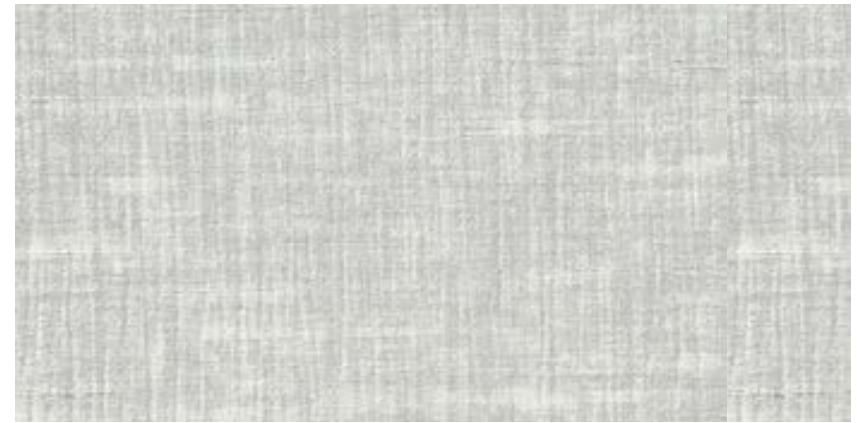
Reverse Random

HORIZONTAL REPEAT

N/A

VERTICAL REPEAT

N/A



PV6417



PV6418



PV6419



PV6420

PREMIERWALL VOGUE

PV6417
DEMI-TONE LINEN

ROLL SIZE	: 52-54" x 30 yds
COMPOSITION	: VINYL
BACKING	: Osnaburg
WEIGHT	: 20 oz
PATTERN MATCH	: Reverse Random



PREMIERWALL VOGUE

PV6418

DEMI-TONE LINEN

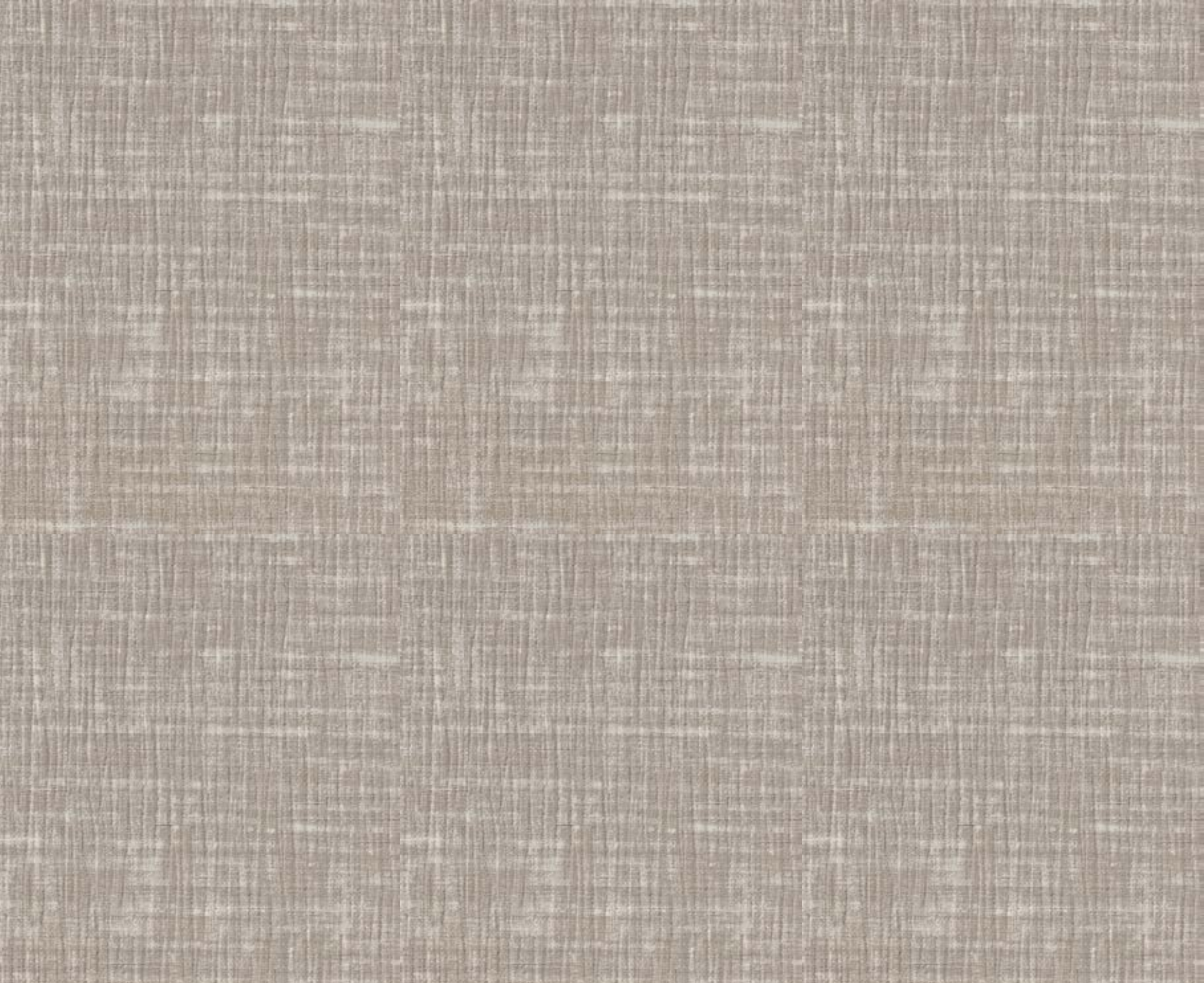
ROLL SIZE	: 52-54" x 30 yds
COMPOSITION	: VINYL
BACKING	: Osnaburg
WEIGHT	: 20 oz
PATTERN MATCH	: Reverse Random



PREMIERWALL VOGUE

PV6419
DEMI-TONE LINEN

ROLL SIZE	: 52-54" x 30 yds
COMPOSITION	: VINYL
BACKING	: Osnaburg
WEIGHT	: 20 oz
PATTERN MATCH	: Reverse Random



PREMIERWALL VOGUE

PV6420

DEMI-TONE LINEN

ROLL SIZE	: 52-54" x 30 yds
COMPOSITION	: VINYL
BACKING	: Osnaburg
WEIGHT	: 20 oz
PATTERN MATCH	: Reverse Random

ANGLES SILK

EXECUTIVE
OFFICE



PHYSICAL PROPERTIES

WEIGHT

Type II - 20 oz

BACKING

Osnaburg | Width: 54 in./137cm

MATCH

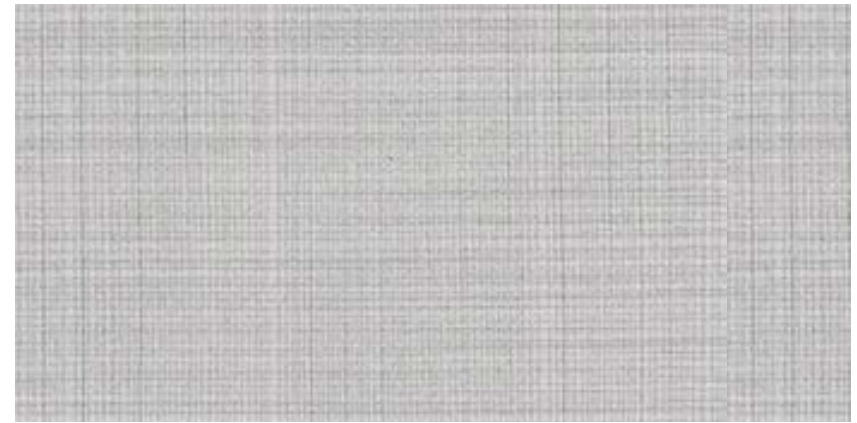
Reverse Random

HORIZONTAL REPEAT

N/A

VERTICAL REPEAT

N/A



PV6421



PV6422



PV6423



PV6424

PREMIERWALL VOGUE

PV6421
ANGLES SILK

ROLL SIZE	: 52-54" x 30 yds
COMPOSITION	: VINYL
BACKING	: Osnaburg
WEIGHT	: 20 oz
PATTERN MATCH	: Reverse Random

PREMIERWALL VOGUE

PV6422
ANGLES SILK

ROLL SIZE	: 52-54" x 30 yds
COMPOSITION	: VINYL
BACKING	: Osnaburg
WEIGHT	: 20 oz
PATTERN MATCH	: Reverse Random



PREMIERWALL VOGUE

PV6423
ANGLES SILK

ROLL SIZE	: 52-54" x 30 yds
COMPOSITION	: VINYL
BACKING	: Osnaburg
WEIGHT	: 20 oz
PATTERN MATCH	: Reverse Random

PREMIERWALL VOGUE

PV6424
ANGLES SILK

ROLL SIZE	: 52-54" x 30 yds
COMPOSITION	: VINYL
BACKING	: Osnaburg
WEIGHT	: 20 oz
PATTERN MATCH	: Reverse Random

SISAL SONG



PHYSICAL PROPERTIES

WEIGHT

Type II - 20 oz

BACKING

Osnaburg | Width: 54 in./137cm

MATCH

Reverse Random

HORIZONTAL REPEAT

N/A

VERTICAL REPEAT

N/A



PV6425



PV6426



PV6427



PV6428



PREMIERWALL VOGUE

PV6425
SISAL SONG

ROLL SIZE	: 52-54" x 30 yds
COMPOSITION	: VINYL
BACKING	: Osnaburg
WEIGHT	: 20 oz
PATTERN MATCH	: Reverse Random



PREMIERWALL VOGUE

PV6426

SISAL SONG

ROLL SIZE	: 52-54" x 30 yds
COMPOSITION	: VINYL
BACKING	: Osnaburg
WEIGHT	: 20 oz
PATTERN MATCH	: Reverse Random

PREMIERWALL VOGUE

PV6427
SISAL SONG

ROLL SIZE	: 52-54" x 30 yds
COMPOSITION	: VINYL
BACKING	: Osnaburg
WEIGHT	: 20 oz
PATTERN MATCH	: Reverse Random

PREMIERWALL VOGUE

PV6428

SISAL SONG

ROLL SIZE	: 52-54" x 30 yds
COMPOSITION	: VINYL
BACKING	: Osnaburg
WEIGHT	: 20 oz
PATTERN MATCH	: Reverse Random

SANSHIN



PHYSICAL PROPERTIES

WEIGHT

Type II - 20 oz

BACKING

Osnaburg | Width: 54 in./137cm

MATCH

Reverse Random

HORIZONTAL REPEAT

N/A

VERTICAL REPEAT

N/A



PV6429



PV6430



PV6431



PV6432



PV6433

PREMIERWALL VOGUE

PV6429

SANSHIN

ROLL SIZE	: 52-54" x 30 yds
COMPOSITION	: VINYL
BACKING	: Osnaburg
WEIGHT	: 20 oz
PATTERN MATCH	: Reverse Random



PREMIERWALL VOGUE

PV6430

SANSHIN

ROLL SIZE	: 52-54" x 30 yds
COMPOSITION	: VINYL
BACKING	: Osnaburg
WEIGHT	: 20 oz
PATTERN MATCH	: Reverse Random



PREMIERWALL VOGUE

PV6431

SANSHIN

ROLL SIZE	: 52-54" x 30 yds
COMPOSITION	: VINYL
BACKING	: Osnaburg
WEIGHT	: 20 oz
PATTERN MATCH	: Reverse Random

PREMIERWALL VOGUE

PV6432

SANSHIN

ROLL SIZE	: 52-54" x 30 yds
COMPOSITION	: VINYL
BACKING	: Osnaburg
WEIGHT	: 20 oz
PATTERN MATCH	: Reverse Random



PREMIERWALL VOGUE

PV6433

SANSHIN

ROLL SIZE	: 52-54" x 30 yds
COMPOSITION	: VINYL
BACKING	: Osnaburg
WEIGHT	: 20 oz
PATTERN MATCH	: Reverse Random

TWEED



PHYSICAL PROPERTIES

WEIGHT

Type II - 20 oz

BACKING

Osnaburg | Width: 54 in./137cm

MATCH

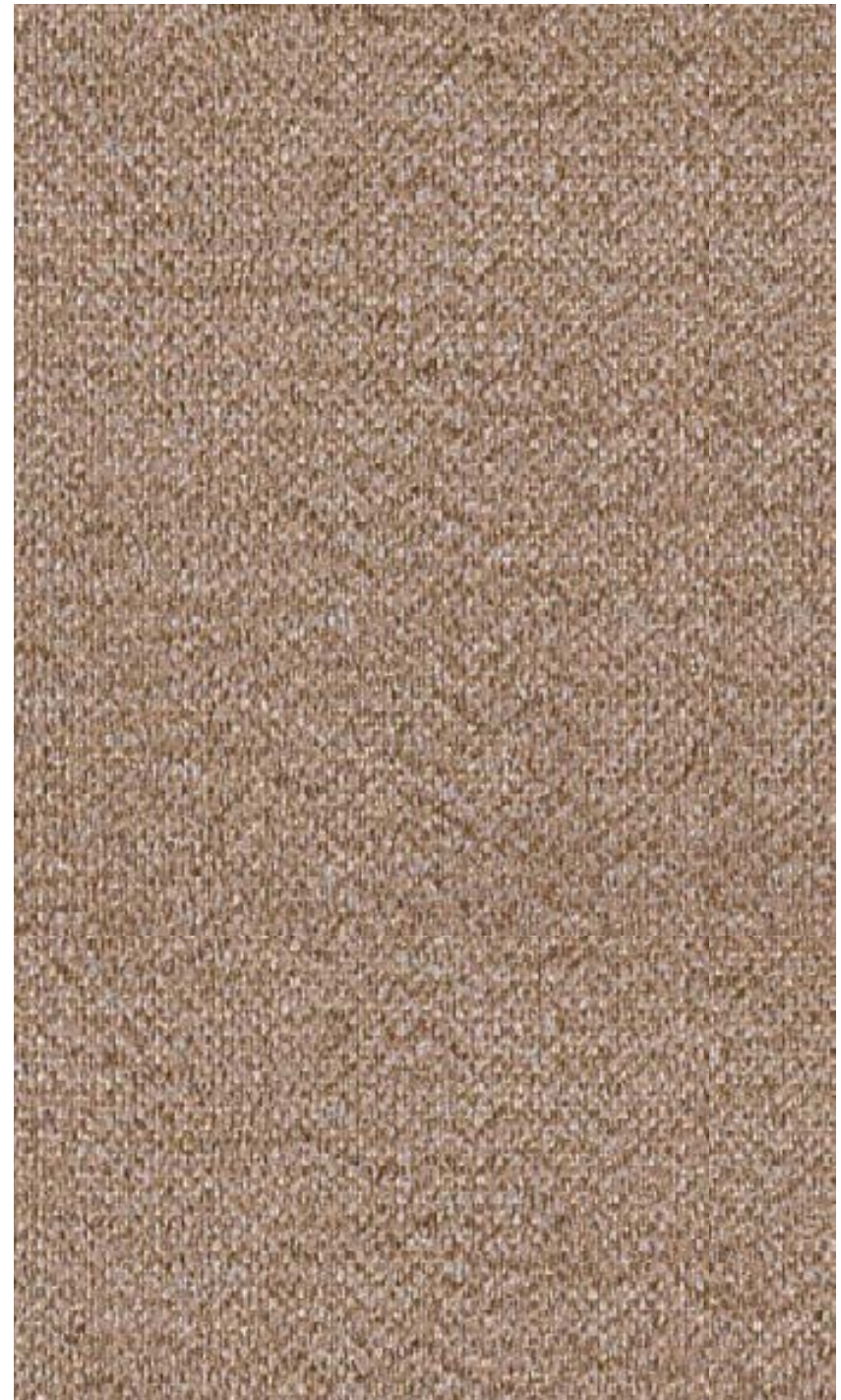
Reverse Random

HORIZONTAL REPEAT

N/A

VERTICAL REPEAT

N/A



PV6434



PV6435



PV6436

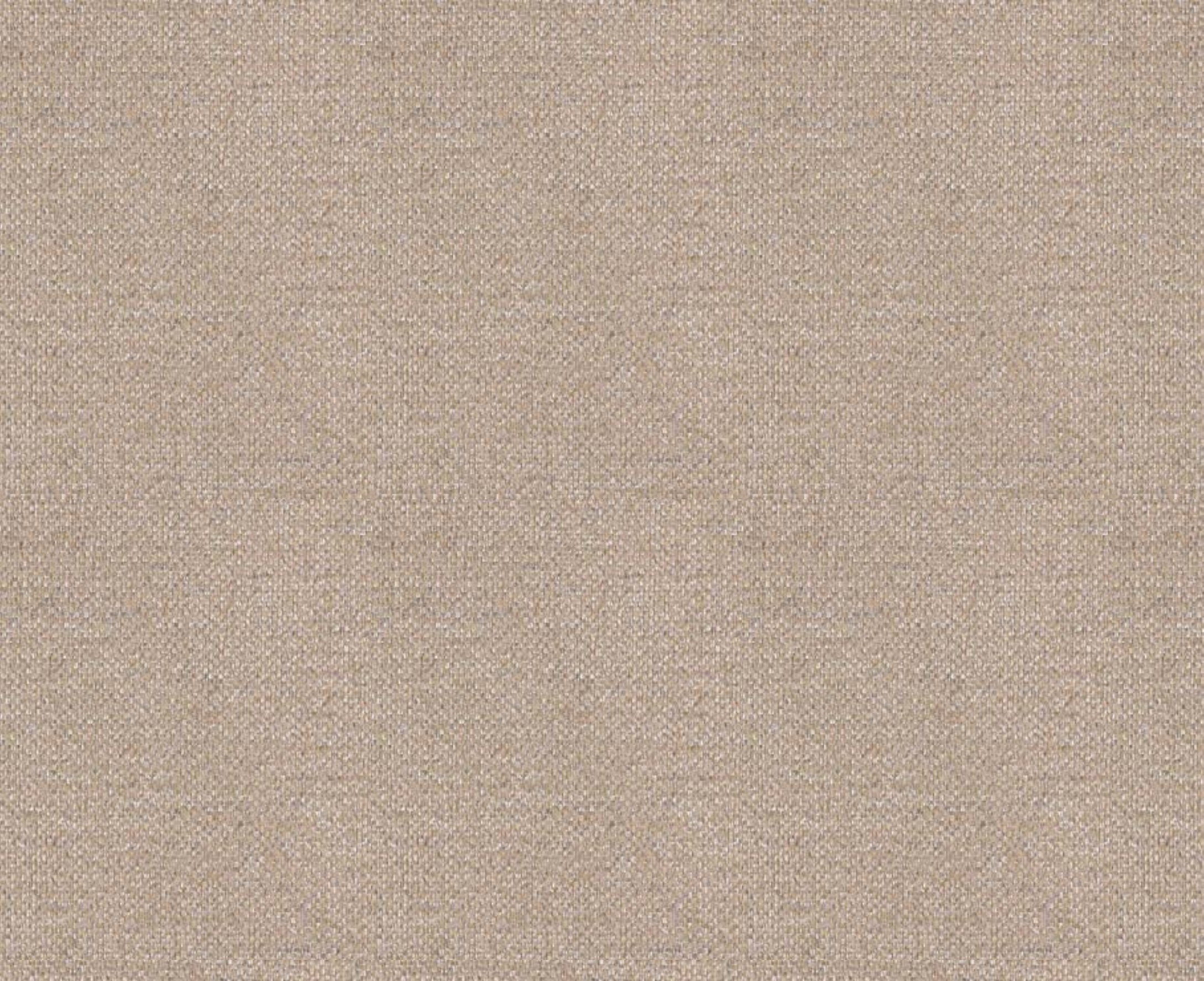


PREMIERWALL VOGUE

PV6434

TWEED

ROLL SIZE	: 52-54" x 30 yds
COMPOSITION	: VINYL
BACKING	: Osnaburg
WEIGHT	: 20 oz
PATTERN MATCH	: Reverse Random



PREMIERWALL VOGUE

PV6435

TWEED

ROLL SIZE	: 52-54" x 30 yds
COMPOSITION	: VINYL
BACKING	: Osnaburg
WEIGHT	: 20 oz
PATTERN MATCH	: Reverse Random



PREMIERWALL VOGUE

PV6436

TWEED

ROLL SIZE	: 52-54" x 30 yds
COMPOSITION	: VINYL
BACKING	: Osnaburg
WEIGHT	: 20 oz
PATTERN MATCH	: Reverse Random

LEVELS



PHYSICAL PROPERTIES

WEIGHT

Type II - 20 oz

BACKING

Osnaburg | Width: 54 in./137cm

MATCH

Reverse Random

HORIZONTAL REPEAT

N/A

VERTICAL REPEAT

N/A



PV6437



PV6438



PV6439



PV6440




PV6441

PREMIERWALL VOGUE

PV6437

LEVELS

ROLL SIZE	: 52-54" x 30 yds
COMPOSITION	: VINYL
BACKING	: Osnaburg
WEIGHT	: 20 oz
PATTERN MATCH	: Reverse Random



PREMIERWALL VOGUE

PV6438

LEVELS

ROLL SIZE	: 52-54" x 30 yds
COMPOSITION	: VINYL
BACKING	: Osnaburg
WEIGHT	: 20 oz
PATTERN MATCH	: Reverse Random

PREMIERWALL VOGUE

PV6439

LEVELS

ROLL SIZE	: 52-54" x 30 yds
COMPOSITION	: VINYL
BACKING	: Osnaburg
WEIGHT	: 20 oz
PATTERN MATCH	: Reverse Random

PREMIERWALL VOGUE

PV6440

LEVELS

ROLL SIZE	: 52-54" x 30 yds
COMPOSITION	: VINYL
BACKING	: Osnaburg
WEIGHT	: 20 oz
PATTERN MATCH	: Reverse Random

PREMIERWALL VOGUE

PV6441

LEVELS

ROLL SIZE	: 52-54" x 30 yds
COMPOSITION	: VINYL
BACKING	: Osnaburg
WEIGHT	: 20 oz
PATTERN MATCH	: Reverse Random

REFLECTION



PHYSICAL PROPERTIES

WEIGHT

Type II - 20 oz

BACKING

Osnaburg | Width: 54 in./137cm

MATCH

Reverse Random

HORIZONTAL REPEAT

N/A

VERTICAL REPEAT

N/A



PV6442



PV6443



PV6444



PV6445



PV6446



PV6447



PREMIERWALL VOGUE

PV6442
REFLECTION

ROLL SIZE	: 52-54" x 30 yds
COMPOSITION	: VINYL
BACKING	: Osnaburg
WEIGHT	: 20 oz
PATTERN MATCH	: Reverse Random



PREMIERWALL VOGUE

PV6443
REFLECTION

ROLL SIZE	: 52-54" x 30 yds
COMPOSITION	: VINYL
BACKING	: Osnaburg
WEIGHT	: 20 oz
PATTERN MATCH	: Reverse Random



PREMIERWALL VOGUE

PV6444
REFLECTION

ROLL SIZE	: 52-54" x 30 yds
COMPOSITION	: VINYL
BACKING	: Osnaburg
WEIGHT	: 20 oz
PATTERN MATCH	: Reverse Random



PREMIERWALL VOGUE

PV6445
REFLECTION

ROLL SIZE	: 52-54" x 30 yds
COMPOSITION	: VINYL
BACKING	: Osnaburg
WEIGHT	: 20 oz
PATTERN MATCH	: Reverse Random

PREMIERWALL VOGUE

PV6446

REFLECTION

ROLL SIZE	: 52-54" x 30 yds
COMPOSITION	: VINYL
BACKING	: Osnaburg
WEIGHT	: 20 oz
PATTERN MATCH	: Reverse Random

PREMIERWALL VOGUE

PV6447

REFLECTION

ROLL SIZE	: 52-54" x 30 yds
COMPOSITION	: VINYL
BACKING	: Osnaburg
WEIGHT	: 20 oz
PATTERN MATCH	: Reverse Random

SAFARI



PHYSICAL PROPERTIES

WEIGHT

Type II - 20 oz

BACKING

Osnaburg | Width: 54 in./137cm

MATCH

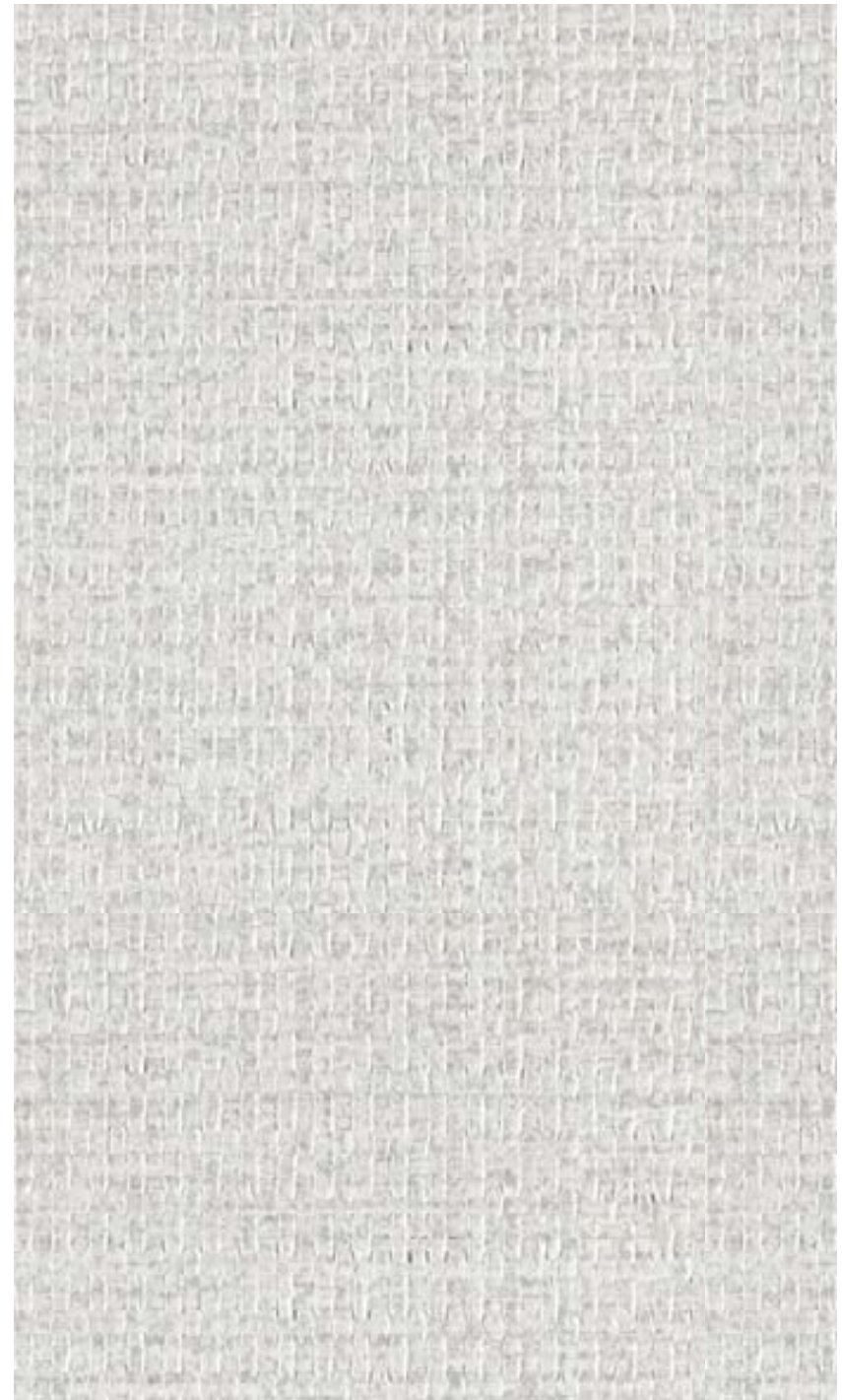
Reverse Random

HORIZONTAL REPEAT

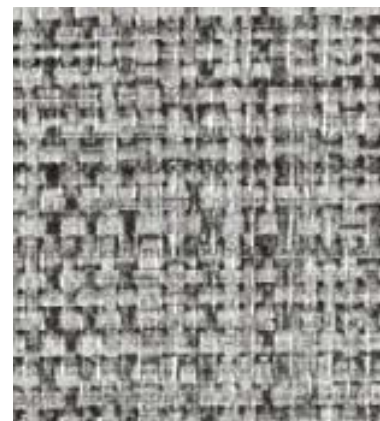
18 in.

VERTICAL REPEAT

27 in.



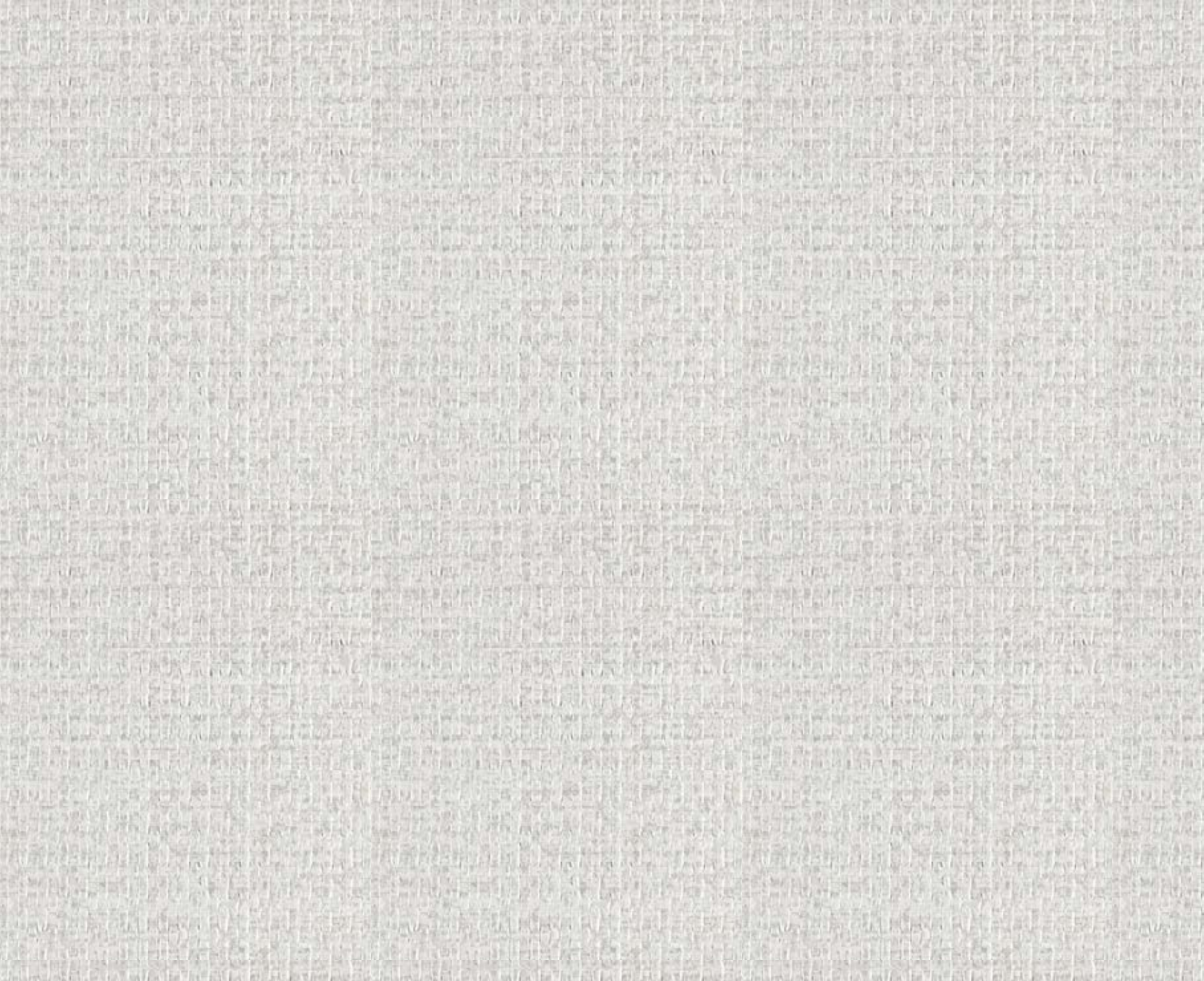
PV6448



PV6449



PV6450

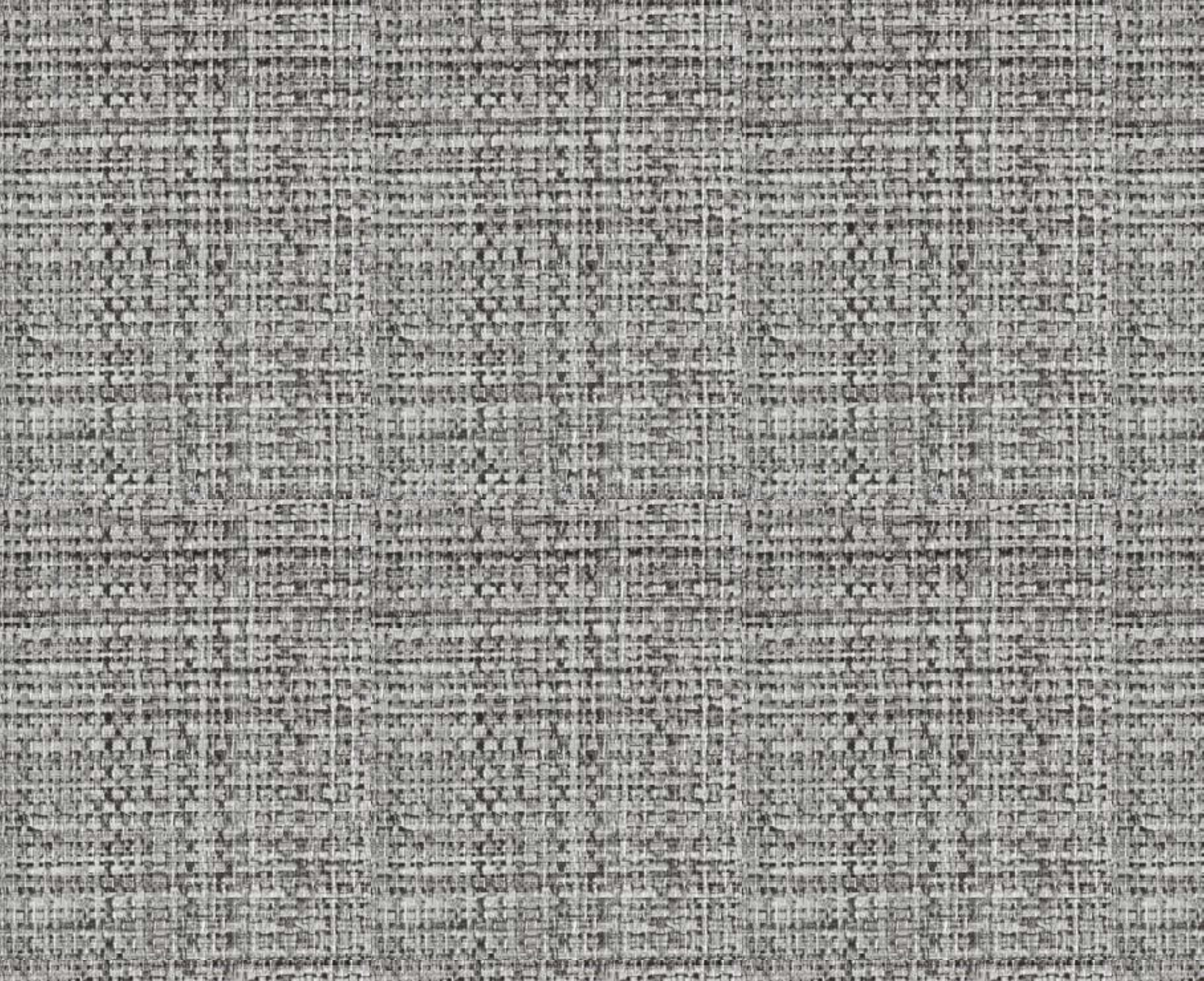


PREMIERWALL VOGUE

PV6448

SAFARI

ROLL SIZE	: 52-54" x 30 yds
COMPOSITION	: VINYL
BACKING	: Osnaburg
WEIGHT	: 20 oz
PATTERN MATCH	: Reverse Random



PREMIERWALL VOGUE

PV6449

SAFARI

ROLL SIZE	: 52-54" x 30 yds
COMPOSITION	: VINYL
BACKING	: Osnaburg
WEIGHT	: 20 oz
PATTERN MATCH	: Reverse Random



PREMIERWALL VOGUE

PV6450

SAFARI

ROLL SIZE	: 52-54" x 30 yds
COMPOSITION	: VINYL
BACKING	: Osnaburg
WEIGHT	: 20 oz
PATTERN MATCH	: Reverse Random

WALLCOVERING ADHESIVE

- *Specially formulated for all types of contract wallcoverings*
- *Non Hazardous, Non Toxic, Non Flammable, Non-Staining*
- *Solvent Free and Formaldehyde Free*
- *VOC is 0.45mg/kg*
- *Made in England*



COMPLIES TO:

- ♥ Regulation (EC No 1907/2006)
- ♥ CLP European Regulation (EC) No 1272/2008
- ♥ BS3046/1981



Installation and Maintenance Guidelines

BEFORE YOU BEGIN

Examine the material carefully to ensure that the pattern, colour, and quality are satisfactory and as ordered. Check that the quantity and dimensions match the required specifications, prior to cutting. In the event that any discrepancies are found, STOP and contact Goodrich Global before proceeding.

We recommend that the wall moisture content does not exceed 4% using a reputable moisture meter, and that active moisture infiltration, condensation, and/or accumulation - particularly in warm, humid climates - is not present. If walls show mould, mildew or visible moisture damage, or if moisture content exceeds recommendations, do not proceed with installation until the condition has been fully corrected under the direction of a qualified professional. Goodrich Global will not be responsible for any performance or quality issues if moisture problems are not addressed before or following installation.

HANGING GUIDELINES

Wallcovering rolls are numbered consecutively and should be cut and installed in reverse sequence, starting with the highest numbered roll. All strips should be hung in sequence as they are cut from the roll, using full widths of material, whenever possible. Install the wallcovering under permanent lighting conditions to evaluate colour and texture uniformity.

When hanging non-reversible or matching patterns, measure the wall height, allowing for pattern match, add 4", and table trim using a straight edge to ensure alignment across seams. Large, dominant pattern repeats require more careful planning as far as starting point, ceiling line, chair rails, door/window headers, etc. Patterns are meant to match at eye level and may run off slightly at the top and bottom of the wall. When hanging textured or random-match patterns, reverse hang alternate strips for a more uniform appearance; overlap and double cut, being careful not to score the wall. If the pattern effect is not acceptable after three strips are hung, re-hang strip #2 without reversing.

If any defect, colour variation, or unacceptable pattern effect is noticeable after three panels are cut and hung, STOP and contact Goodrich Global immediately. Goodrich Global cannot accept any claims on labour or material after more than three lengths have been installed.

ADHESIVE APPLICATION

Apply a uniform coat of a premixed vinyl wallcovering adhesive to the back of the material using a short-napped paint roller or stiff bristle brush (a pasting machine can be used at the installer's discretion). Goodrich WA202 adhesive is recommended for heavyweight vinyl wallcovering. Fold each sheet over and allow up to 10 minutes booking time for the adhesive to penetrate the backing of the lightweight vinyl material (up to 15 minutes for heavyweight vinyl), and to avoid paste drying at the edges.

INSTALLATION

Hang the first strip to a plumb line, overlapping the ceiling and baseboard, within 12 minutes of paste application. Use a stiff bristle brush to ensure that the wallcovering makes contact with the wall. A plastic smoother can also be used on non-metallic Vinyls, providing only light pressure is applied (do not use sharp-edged tools). Smooth from the middle to the outside edges, being careful not to stretch the material, and work out all air bubbles. Trim at the ceiling and baseboard with a sharp razor blade. For matched patterns, butt the second strip to the edge of the first and smooth out firmly. When double cutting non-matching patterns, place a 2-3" wide strip behind the seam to avoid scoring the wall. Flatten seams exerting light pressure with a seam roller. Low-adhesive painter's tape can be used to keep the face of the seams clean. Before applying the next strip, trim the top and bottom as with the first panel, and proceed in the same manner around the room.

Avoid cutting narrow widths of material for placement above doors and below windows. Vertical joints should not occur less than six inches from inside or outside corners. When trimming at chair rails and ceilings, always use a broad knife rather than a straight edge. Take extra care in keeping the adhesive off the face of the wallcovering.

Remove excess adhesive immediately with a natural sponge, frequently rinsed in clear, warm water, and dry with a soft, lint free cloth. After installation, the walls and wallcovering should be monitored for potential moisture or vapour infiltration, which must be promptly eliminated.

MAINTENANCE

Most wallcovering is easily cleaned using clear, warm water and mild soap with a natural sponge. A soft cloth or towel should only be used to tamp dry (do not rub). Stubborn stains can be removed with a laundry spot remover or rubbing alcohol. Do not use solvent-based cleaning agents, lacquer thinners, nail polish remover, pine oil, or cleaning agents containing bleach, which may cause discoloration over time.

Note: The above is intended only as a guideline. Wallcovering installations must conform to current hanging instructions included with each shipment. The installer has final responsibility for proper installation and evaluation of jobsite conditions.



GOODRICH SOLUTIONS
WALLCOVERING
234 | **VOGUE**

**WITH
GOODRICH,**

Your habitat becomes

A gallery of

Your **self-expressions;**

A canvas for

Your **creativity;**

A space for

Your **soul;**

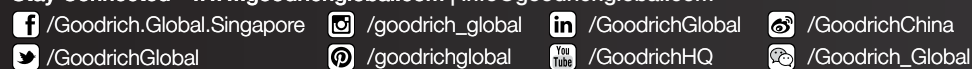
A showcase of

Your **taste for life;**



PREMIERWALL

Stay Connected - www.goodrichglobal.com | info@goodrichglobal.com



SINGAPORE [HQ] | CHINA | HONG KONG (CHINA) | INDIA | INDONESIA | MALAYSIA | MYANMAR | PHILIPPINES | THAILAND | UNITED ARAB EMIRATES | VIETNAM

Copyright © 2020 Goodrich Global. All rights reserved.